



# GAT MONTHLY MEMBERSHIP PROGRESS REPORT

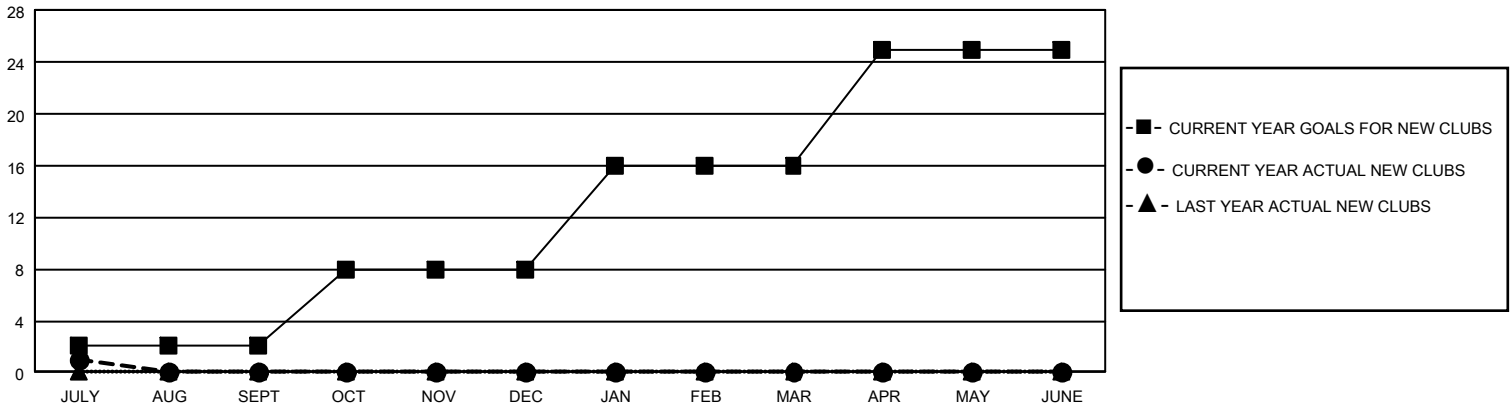
Results as of: 7/31/2021

## GMT Constitutional Area 1, Group J

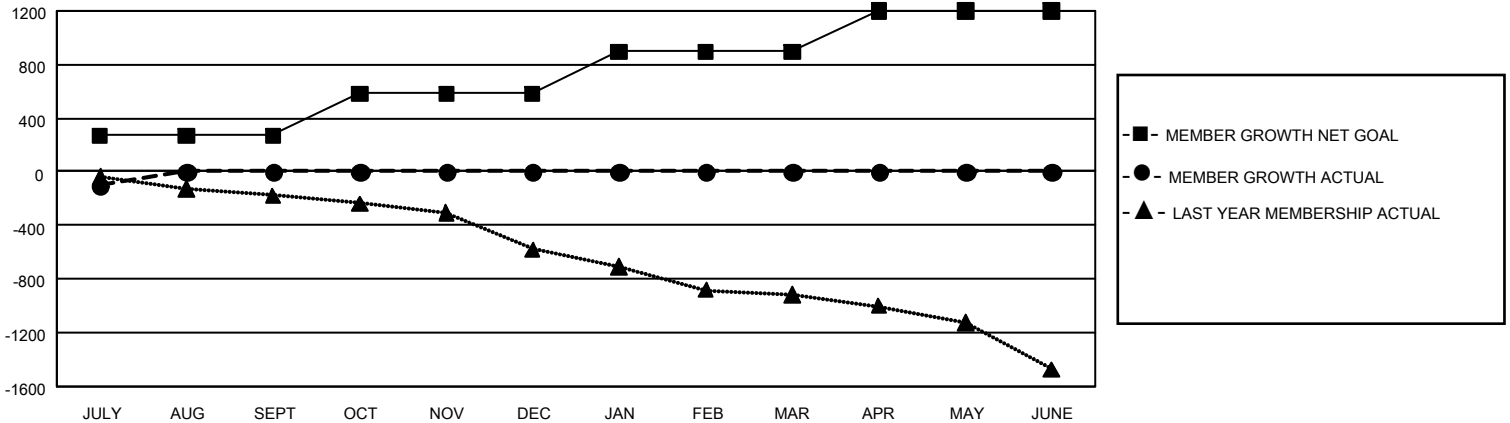
REPORT DOES NOT INCLUDE CLUBS IN UNDISTRICTED AREAS.

| Clubs                 |               |           |               | Members               |                        |                      |  |
|-----------------------|---------------|-----------|---------------|-----------------------|------------------------|----------------------|--|
| RESULTS FOR 2021-2022 |               |           |               | RESULTS FOR 2021-2022 |                        |                      |  |
| QUARTER               | NEW CLUB GOAL | NEW CLUBS | DROPPED CLUBS | QUARTER               | MEMBER GROWTH NET GOAL | MEMBER GROWTH ACTUAL | DROPPED MEMBERS ACTUAL (including transfers) |
| JULY/AUG/SEPT         | 6             | 1         | 7             | JULY/AUG/SEPT         | 270                    | 189                  | 267  |
| OCT/NOV/DEC           | 18            | 0         | 0             | OCT/NOV/DEC           | 314                    | 0                    | 0  |
| JAN/FEB/MAR           | 24            | 0         | 0             | JAN/FEB/MAR           | 311                    | 0                    | 0  |
| APR/MAY/JUNE          | 27            | 0         | 0             | APR/MAY/JUNE          | 302                    | 0                    | 0  |

GOALS AND ACTUAL NEW CLUBS CUMULATIVE



GOALS AND ACTUAL MEMBERS CUMULATIVE



|                         |   |                                       |                 |
|-------------------------|---|---------------------------------------|-----------------|
| <b>DROPPED CLUBS: 7</b> | 86 CLUBS OF 933 ADDED 1 OR MORE NEW MEMBERS | <u>GENDER DISTRIBUTION</u>            |                 |
| <u>DROPPED MEMBERS</u>  |   | MALE                                  | 15,061 (70.99%) |
| DECEASED                | 32  | FEMALE                                | 6,154 (29.01%)  |
| CLUB CANCELLED          | 0   | TOTAL FAMILY UNIT MEMBERS 4,121       |                 |
| OTHER                   | 235   | FAMILY MEMBERS PAYING HALF DUES 2,101 |                 |
| <b>TOTAL</b>            | <b>267</b>                                  |                                       |                 |

[CLICK HERE FOR CUMULATIVE MEMBERSHIP DATA](#)